

Product overview



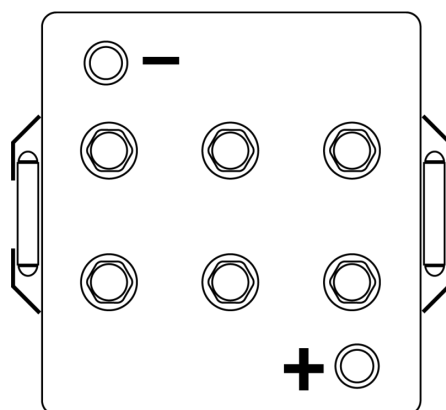
Batteries for Marine and Leisure

Equipment GEL ES1200

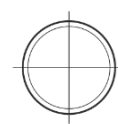
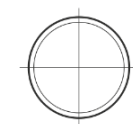
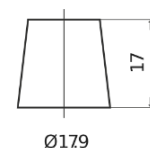
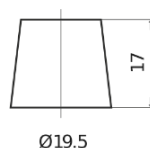


Part number	ES1200
Technology	GEL
EAN/GTIN	3661024035798
Voltage	12 V
Capacity	110.0 Ah
Watt hour	1200 Wh
Length	284 mm
Width	267 mm
Height	226 mm
Box size	D07
Polarity	ETN 2
Terminal Type	EN taper post
Hold Down	B0
Weights (subject of variation)	37.50 kg

Polarity



Terminal Type



Positive Terminal

Negative Terminal

Hold Down



Design, features and specifications are subject to change without notice. We disclaim any representation or warranty, express or implied, concerning the data or recommendations, and in no event shall be liable for any loss or damage claimed to have arisen as a result. Some products may not be available in your local market.