

Product overview

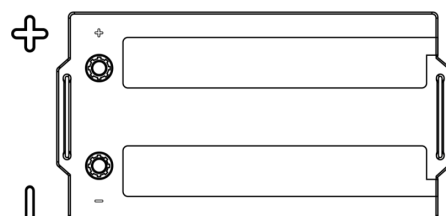
Batteries for Trucks, Buses, Construction, Agriculture

StrongPRO EFB+ EE2353

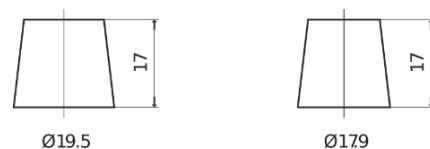


Part number	EE2353
Technology	EFB
EAN/GTIN	3661024036870
Voltage	12 V
Capacity	235.0 Ah
CCA	1200 A
Length	518 mm
Width	274 mm
Height	240 mm
Box size	D06
Polarity	ETN 3
Terminal Type	EN taper post
Hold Down	B0
Weights (subject of variation)	58.20 kg

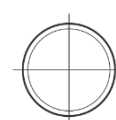
Polarity



Terminal Type



Positive Terminal



Negative Terminal

Hold Down



Design, features and specifications are subject to change without notice. We disclaim any representation or warranty, express or implied, concerning the data or recommendations, and in no event shall be liable for any loss or damage claimed to have arisen as a result. Some products may not be available in your local market.