



Product overview



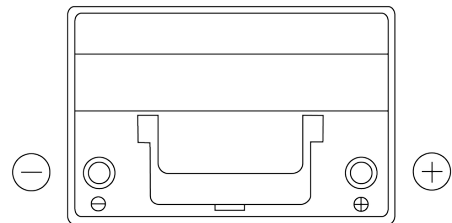
Batteries for Cars

EFB EL754

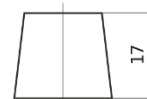


Part number	EL754
Technology	EFB
EAN/GTIN	3661024037631
Voltage	12 V
Capacity	75 Ah
CCA	750 A
Length	260 mm
Width	173 mm
Height	222 mm
Box size	D26
Polarity	ETN 0
Terminal Type	EN taper post
Hold Down	B0
Weights (subject of variation)	19.00 kg

Polarity



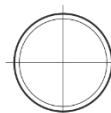
Terminal Type



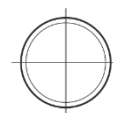
Ø19.5



Ø17



Positive Terminal



Negative Terminal

Hold Down



Design, features and specifications are subject to change without notice. We disclaim any representation or warranty, express or implied, concerning the data or recommendations, and in no event shall be liable for any loss or damage claimed to have arisen as a result. Some products may not be available in your local market.