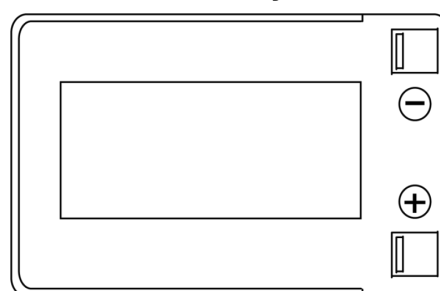
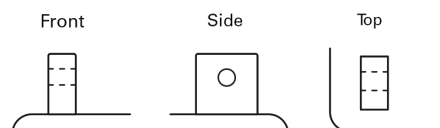


**Product overview**

Batteries for Cars

**Start-Stop Auxiliary SK143**

Part number	SK143
Technology	AGM
EAN/GTIN	3661024066389
Voltage	12 V
Capacity	14.0 Ah
CCA	80 A
Length	150 mm
Width	100 mm
Height	100 mm
Box size	C76
Polarity	ETN 3
Terminal Type	Screwed/Lug
Hold Down	B0
Weights (subject of variation)	4.20 kg

**Polarity****Terminal Type****Hold Down**

Design, features and specifications are subject to change without notice. We disclaim any representation or warranty, express or implied, concerning the data or recommendations, and in no event shall be liable for any loss or damage claimed to have arisen as a result. Some products may not be available in your local market.