

## Product overview

Batteries for Marine and Leisure

### Equipment GEL ES900

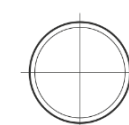
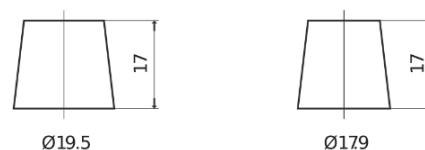


Part number	ES900
Technology	GEL
EAN/GTIN	3661024035835
Voltage	12 V
Capacity	80.0 Ah
Watt hour	900 Wh
Length	353 mm
Width	175 mm
Height	190 mm
Box size	L05
Polarity	ETN 0
Terminal Type	EN taper post
Hold Down	B13
Weights (subject of variation)	25.50 kg

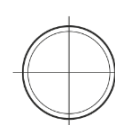
#### Polarity



#### Terminal Type



Positive Terminal



Negative Terminal

#### Hold Down



Design, features and specifications are subject to change without notice. We disclaim any representation or warranty, express or implied, concerning the data or recommendations, and in no event shall be liable for any loss or damage claimed to have arisen as a result. Some products may not be available in your local market.