

Product overview

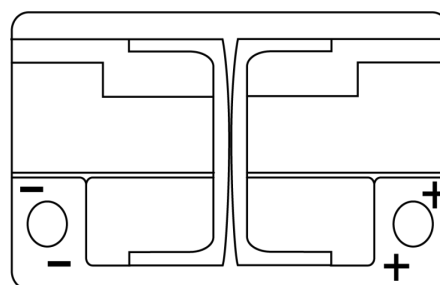
Batteries for Cars

EFB TL700

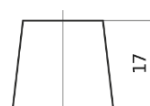


Part number	TL700
Technology	EFB
EAN/GTIN	3661024055697
Voltage	12 V
Capacity	70.0 Ah
CCA	760 A
Length	278 mm
Width	175 mm
Height	190 mm
Box size	L03
Polarity	ETN 0
Terminal Type	EN taper post
Hold Down	B13
Weights (subject of variation)	19.30 kg

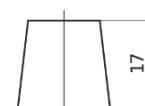
Polarity



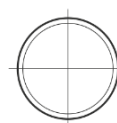
Terminal Type



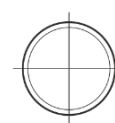
Ø19.5



Ø17



Positive Terminal



Negative Terminal

Hold Down

5 notches



Design, features and specifications are subject to change without notice. We disclaim any representation or warranty, express or implied, concerning the data or recommendations, and in no event shall be liable for any loss or damage claimed to have arisen as a result. Some products may not be available in your local market.