



## Product overview



Batteries for Cars

### EFB DL600



START  
STOP



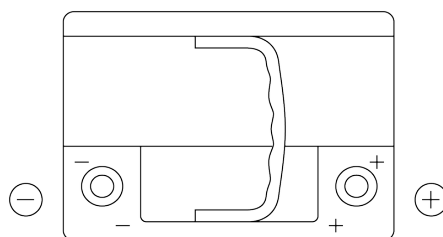
MANDATORY  
FOR START-STOP  
VEHICLES



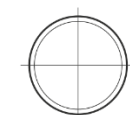
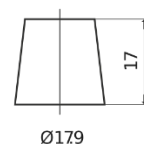
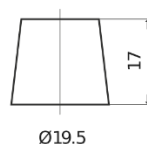
RECOMMENDED  
FOR HIGH  
ELECTRICAL NEEDS

|                                |               |
|--------------------------------|---------------|
| Part number                    | DL600         |
| Technology                     | EFB           |
| EAN/GTIN                       | 3661024025683 |
| Voltage                        | 12 V          |
| Capacity                       | 60 Ah         |
| CCA                            | 640 A         |
| Length                         | 242 mm        |
| Width                          | 175 mm        |
| Height                         | 190 mm        |
| Box size                       | L02           |
| Polarity                       | ETN 0         |
| Terminal Type                  | EN taper post |
| Hold Down                      | B13           |
| Weights (subject of variation) | 17.00 kg      |

#### Polarity



#### Terminal Type



Positive Terminal



Negative Terminal

#### Hold Down

5 notches



Design, features and specifications are subject to change without notice. We disclaim any representation or warranty, express or implied, concerning the data or recommendations, and in no event shall be liable for any loss or damage claimed to have arisen as a result. Some products may not be available in your local market.