

## Product overview

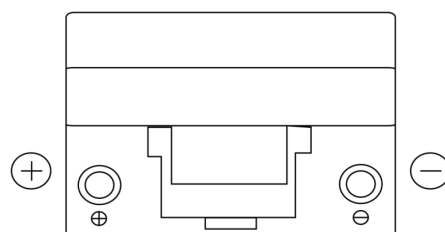
Batteries for Cars

### Standard TC905

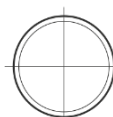


Part number	TC905
Technology	Flooded
EAN/GTIN	3661024054768
Voltage	12 V
Capacity	90.0 Ah
CCA	680 A
Length	306 mm
Width	173 mm
Height	222 mm
Box size	D31
Polarity	ETN 1
Terminal Type	EN taper post
Hold Down	Korean B1
Weights (subject of variation)	19.90 kg

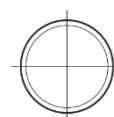
#### Polarity



#### Terminal Type



Positive Terminal



Negative Terminal

#### Hold Down



Design, features and specifications are subject to change without notice. We disclaim any representation or warranty, express or implied, concerning the data or recommendations, and in no event shall be liable for any loss or damage claimed to have arisen as a result. Some products may not be available in your local market.