



Product overview

TUDOR[®]

Batteries for Cars

EFB TL954



START
STOP



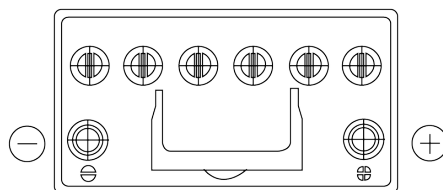
MANDATORY
FOR START-STOP
VEHICLES



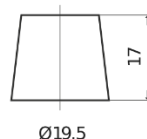
RECOMMENDED
FOR HIGH
ELECTRICAL NEEDS

Part number	TL954
Technology	EFB
EAN/GTIN	3661024056656
Voltage	12 V
Capacity	95 Ah
CCA	800 A
Length	306 mm
Width	173 mm
Height	222 mm
Box size	D31
Polarity	ETN 0
Terminal Type	EN taper post
Hold Down	Korean B1
Weights (subject of variation)	21.80 kg

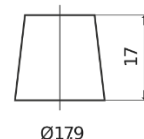
Polarity



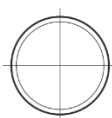
Terminal Type



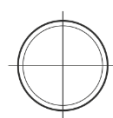
Ø19.5



Ø17.9



Positive Terminal



Negative Terminal

Hold Down



Design, features and specifications are subject to change without notice. We disclaim any representation or warranty, express or implied, concerning the data or recommendations, and in no event shall be liable for any loss or damage claimed to have arisen as a result. Some products may not be available in your local market.