



Product overview



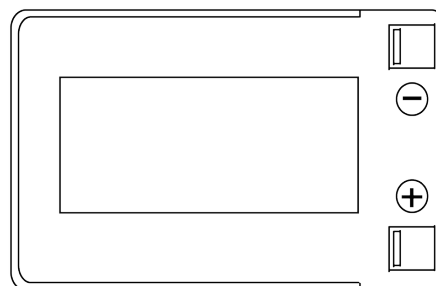
Batteries for Cars

Start-Stop Auxiliary EK143

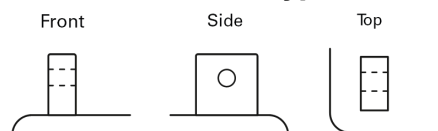


Part number	EK143
Technology	AGM
EAN/GTIN	3661024036658
Voltage	12 V
Capacity	14 Ah
CCA	80 A
Length	150 mm
Width	100 mm
Height	100 mm
Box size	C76
Polarity	ETN 3
Terminal Type	Screwed/Lug
Hold Down	B0
Weights (subject of variation)	4.20 kg

Polarity



Terminal Type



Hold Down



Design, features and specifications are subject to change without notice. We disclaim any representation or warranty, express or implied, concerning the data or recommendations, and in no event shall be liable for any loss or damage claimed to have arisen as a result. Some products may not be available in your local market.