



## Product overview



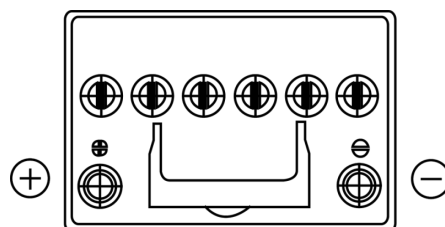
Batteries for Cars

### EFB SL605

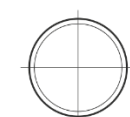


Part number	SL605
Technology	EFB
EAN/GTIN	3661024066419
Voltage	12 V
Capacity	60 Ah
CCA	520 A
Length	230 mm
Width	173 mm
Height	222 mm
Box size	D23
Polarity	ETN 1
Terminal Type	EN taper post
Hold Down	B0
Weights (subject of variation)	15.80 kg

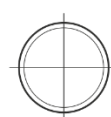
#### Polarity



#### Terminal Type



PositiveTerminal



NegativeTerminal

#### Hold Down



Design, features and specifications are subject to change without notice. We disclaim any representation or warranty, express or implied, concerning the data or recommendations, and in no event shall be liable for any loss or damage claimed to have arisen as a result. Some products may not be available in your local market.