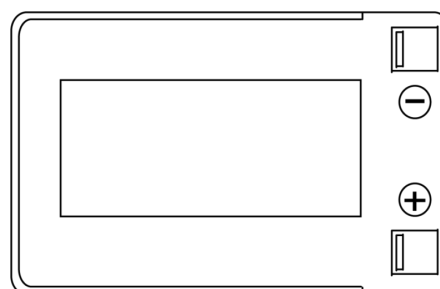
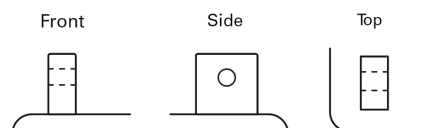


Product overview

Batteries for Cars

Start-Stop Auxiliary TK143

| | |
|--------------------------------|---------------|
| Part number | TK143 |
| Technology | AGM |
| EAN/GTIN | 3661024056618 |
| Voltage | 12 V |
| Capacity | 14.0 Ah |
| CCA | 80 A |
| Length | 150 mm |
| Width | 100 mm |
| Height | 100 mm |
| Box size | C76 |
| Polarity | ETN 3 |
| Terminal Type | Screwed/Lug |
| Hold Down | B0 |
| Weights (subject of variation) | 4.20 kg |

Polarity**Terminal Type****Hold Down**

Design, features and specifications are subject to change without notice. We disclaim any representation or warranty, express or implied, concerning the data or recommendations, and in no event shall be liable for any loss or damage claimed to have arisen as a result. Some products may not be available in your local market.