

Product overview



Batteries for Marine and Leisure

Dual AGM EP1500

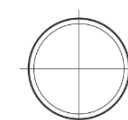
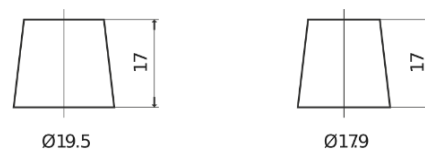


Part number	EP1500
Technology	AGM
EAN/GTIN	3661024035941
Voltage	12 V
Capacity	180.0 Ah
CCA	900 A
Watt hour	1500 Wh
Length	513 mm
Width	223 mm
Height	223 mm
Box size	D05
Polarity	ETN 3
Terminal Type	EN taper post
Hold Down	B0
Weights (subject of variation)	50.00 kg

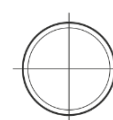
Polarity



Terminal Type



Positive Terminal



Negative Terminal

Hold Down



Design, features and specifications are subject to change without notice. We disclaim any representation or warranty, express or implied, concerning the data or recommendations, and in no event shall be liable for any loss or damage claimed to have arisen as a result. Some products may not be available in your local market.