



## Product overview



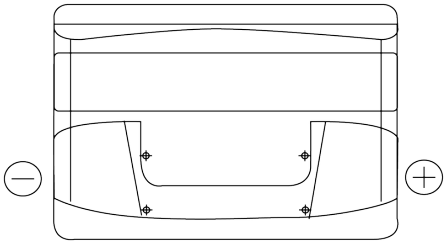
Batteries for Cars

### Excell EB712

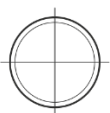
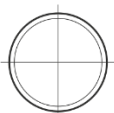
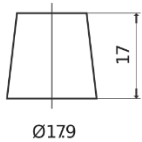
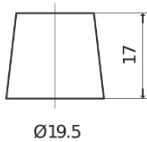


Part number	EB712
Technology	Flooded
EAN/GTIN	3661024034647
Voltage	12 V
Capacity	71 Ah
CCA	670 A
Length	278 mm
Width	175 mm
Height	175 mm
Box size	LB3
Polarity	ETN 0
Terminal Type	EN taper post
Hold Down	B13
Weights (subject of variation)	15.30 kg

#### Polarity



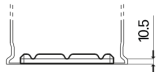
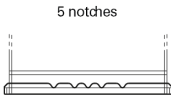
#### Terminal Type



Positive Terminal

Negative Terminal

#### Hold Down



Design, features and specifications are subject to change without notice. We disclaim any representation or warranty, express or implied, concerning the data or recommendations, and in no event shall be liable for any loss or damage claimed to have arisen as a result. Some products may not be available in your local market.