



Product overview



Batteries for Marine and Leisure

Equipment ET650

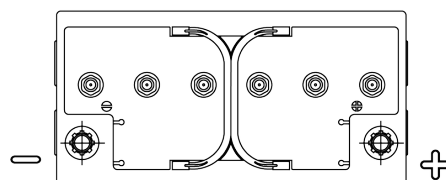


Product registered and
ncc verified
www.thencc.org.uk

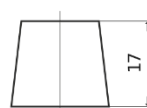


Part number	ET650
Technology	Flooded
EAN/GTIN	3661024035927
Voltage	12 V
Capacity	100 Ah
CCA	800 A
Watt hour	650 Wh
Length	353 mm
Width	175 mm
Height	190 mm
Box size	L05
Polarity	ETN 0
Terminal Type	EN taper post
Hold Down	B13
Weights (subject of variation)	26.50 kg

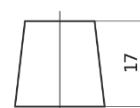
Polarity



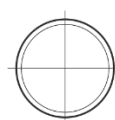
Terminal Type



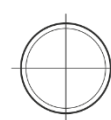
Ø19.5



Ø17.9



Positive Terminal



Negative Terminal

Hold Down

5 notches



Design, features and specifications are subject to change without notice. We disclaim any representation or warranty, express or implied, concerning the data or recommendations, and in no event shall be liable for any loss or damage claimed to have arisen as a result. Some products may not be available in your local market.