



Product overview

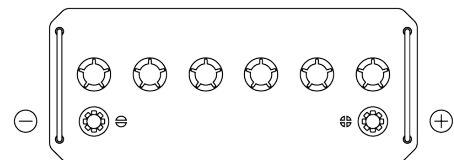
Batteries for Trucks, Buses, Construction, Agriculture

StartPRO EG1008

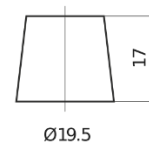


Part number	EG1008
Technology	Flooded
EAN/GTIN	3661024035354
Voltage	12 V
Capacity	100 Ah
CCA	680 A
Length	413 mm
Width	175 mm
Height	220 mm
Box size	D01
Polarity	ETN 0
Terminal Type	EN taper post
Hold Down	B3
Weights (subject of variation)	25.60 kg

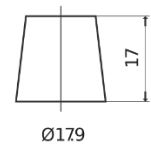
Polarity



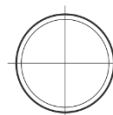
Terminal Type



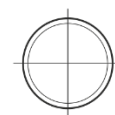
Ø19.5



Ø17.9

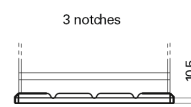


Positive Terminal

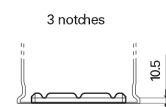


Negative Terminal

Hold Down



3 notches



3 notches

Design, features and specifications are subject to change without notice. We disclaim any representation or warranty, express or implied, concerning the data or recommendations, and in no event shall be liable for any loss or damage claimed to have arisen as a result. Some products may not be available in your local market.